



## 6 Daventry Road Kilsby, Rugby, CV23 8XF

Character, Charm & Village Living at Its Finest.

Tucked away within the ever-popular village of Kilsby, this beautifully presented 1940s semi-detached home occupies a generous plot of approximately 0.13 acres, offering an exceptional balance of stylish interiors, a wonderful garden and a lifestyle that perfectly combines countryside charm with outstanding commuter convenience.

From the moment you arrive, the home exudes warmth and kerb appeal, with a private driveway providing off-road parking for two to three vehicles. Step inside and you'll discover light-filled, thoughtfully presented accommodation that has been lovingly updated while retaining the character expected from a home of this era.

The spacious through lounge and dining room provides a superb social space for both everyday family life and entertaining, centred around a charming wood-burning stove that

Guide price £280,000

# 6 Daventry Road

Kilsby, Rugby, CV23 8XF



- Beautifully presented 1940s semi-detached home in the heart of sought-after Kilsby Village
- Bright and spacious through lounge/dining room with feature fireplace and wood-burning stove
- Contemporary refitted family bathroom finished to a high standard
- No Onward Chain
- Generous plot extending to approximately 0.13 acres
- Stylish refitted kitchen with direct access to the garden
- Driveway providing off-road parking for two to three vehicles
- Stunning, exceptionally long rear garden with patio, mature trees and established planting
- Two generous double bedrooms, both with fitted wardrobes
- Move-in ready accommodation with double glazing and electric heating throughout

## Lounge/Diner

18'6" x 13'6" (5.65 x 4.13)

## Kitchen

14'5" x 6'1" (4.41 x 1.87)

## Bedroom One

12'9" x 8'7" (3.90 x 2.64)

## Bedroom Two

9'3" x 9'3" (2.82 x 2.82)

## Bathroom

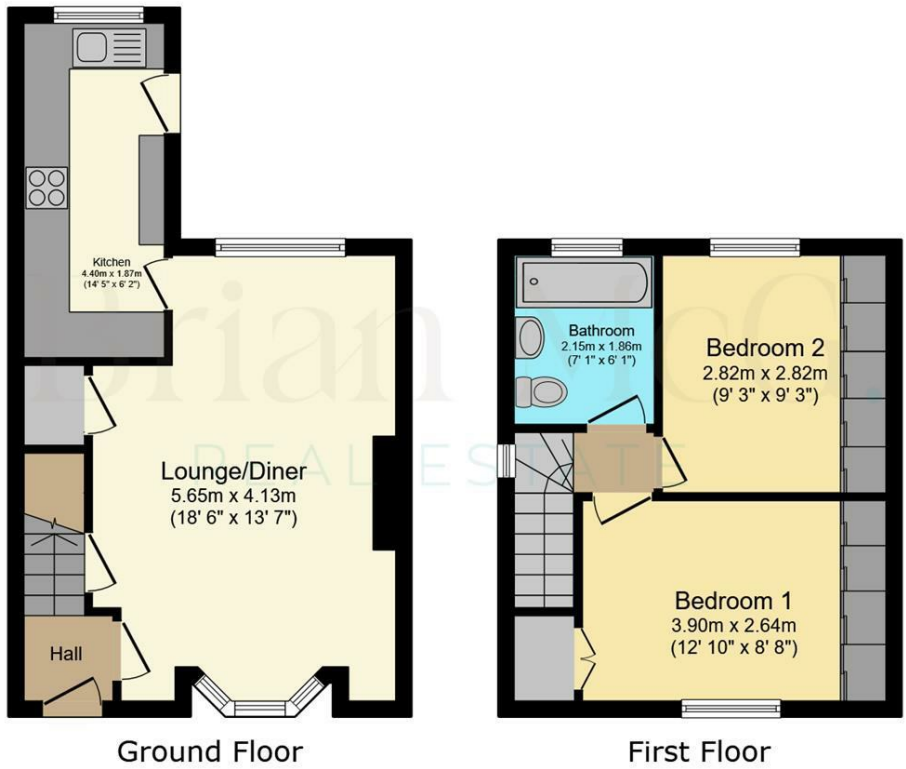
7'0" x 6'1" (2.15 x 1.86)



[Directions](#)



# Floor Plan



Total floor area: 62.7 sq.m. (675 sq.ft.)

This floor plan is for illustrative purposes only. It is not drawn to scale. Any measurements, floor areas (including any total floor area), openings and orientations are approximate. No details are guaranteed, they cannot be relied upon for any purpose and do not form any part of any agreement. No liability is taken for any error, omission or misstatement. A party must rely upon its own inspection(s). Powered by [www.Propertybox.io](http://www.Propertybox.io)

These particulars, whilst believed to be accurate are set out as a general outline only for guidance and do not constitute any part of an offer or contract. Intending purchasers should not rely on them as statements of representation of fact, but must satisfy themselves by inspection or otherwise as to their accuracy. No person in this firm's employment has the authority to make or give any representation or warranty in respect of the property.

